

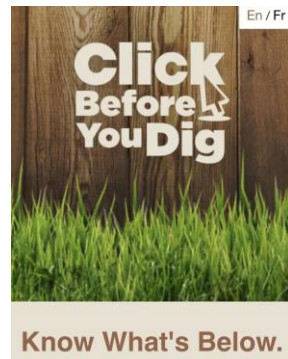
Damage Prevention Risk Assessment Using Real-time Call-Before-You-Dig and Natural Gas GIS Data: Case Study



Melissa Buske, Planview Utility Services Ltd.



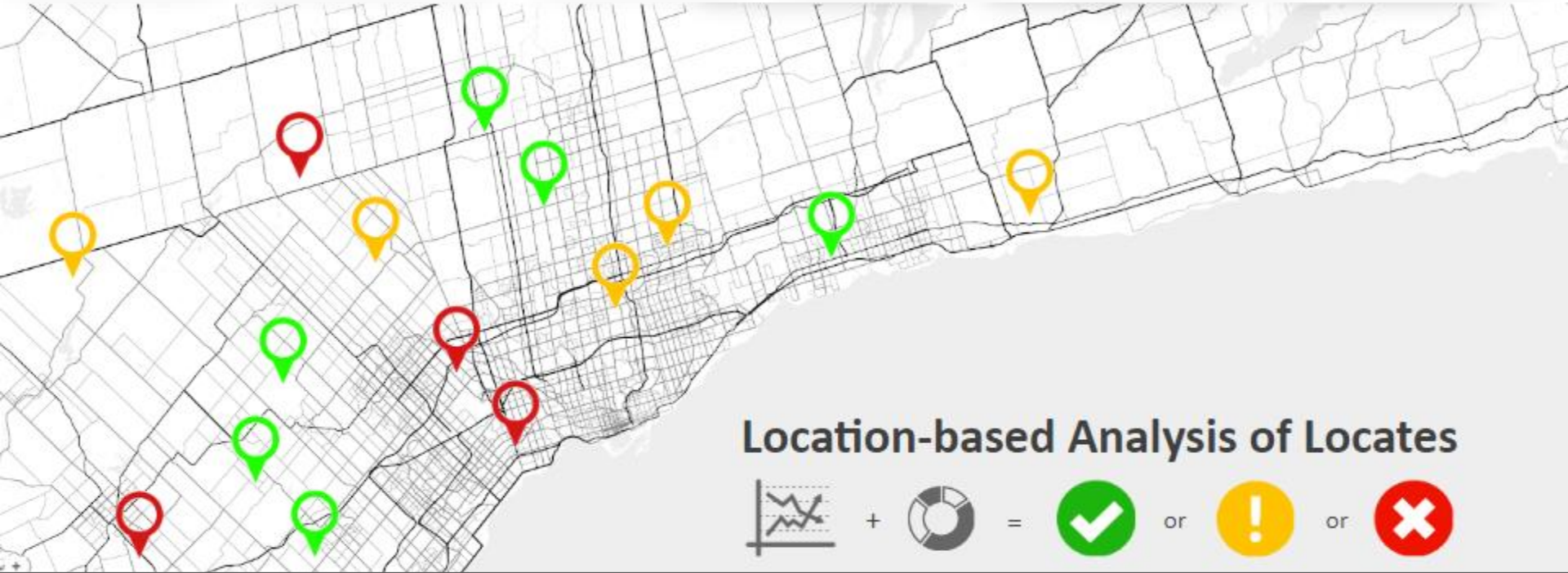
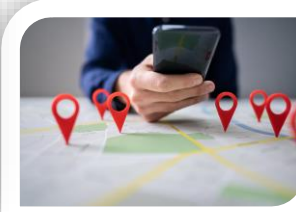
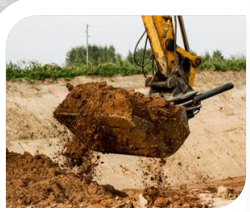
**Click
Before
You Dig**



Probability vs Impact Analytics

Risk = Probability × Impact





Location-based Analysis of Locates



+



=



or



or



Proactive Damage Prevention

Case Study 1

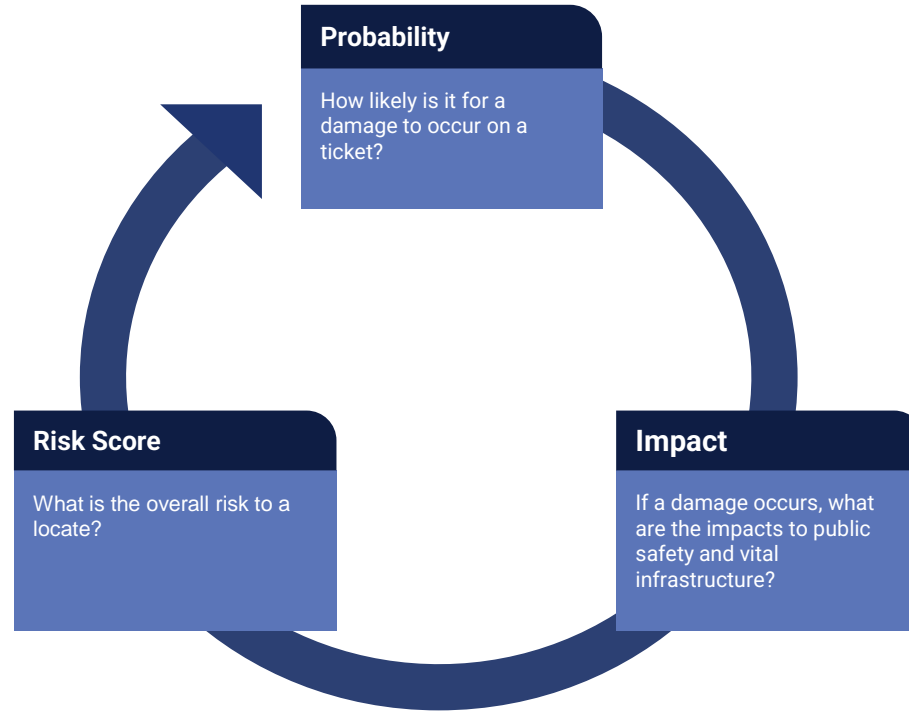
- Predicted >70% of damages

Case Study 2

- Predicted >73% of damage costs
- Reduced large impact damages
- Reduced cost of Lookup/Clearing services



Analysis Workflow



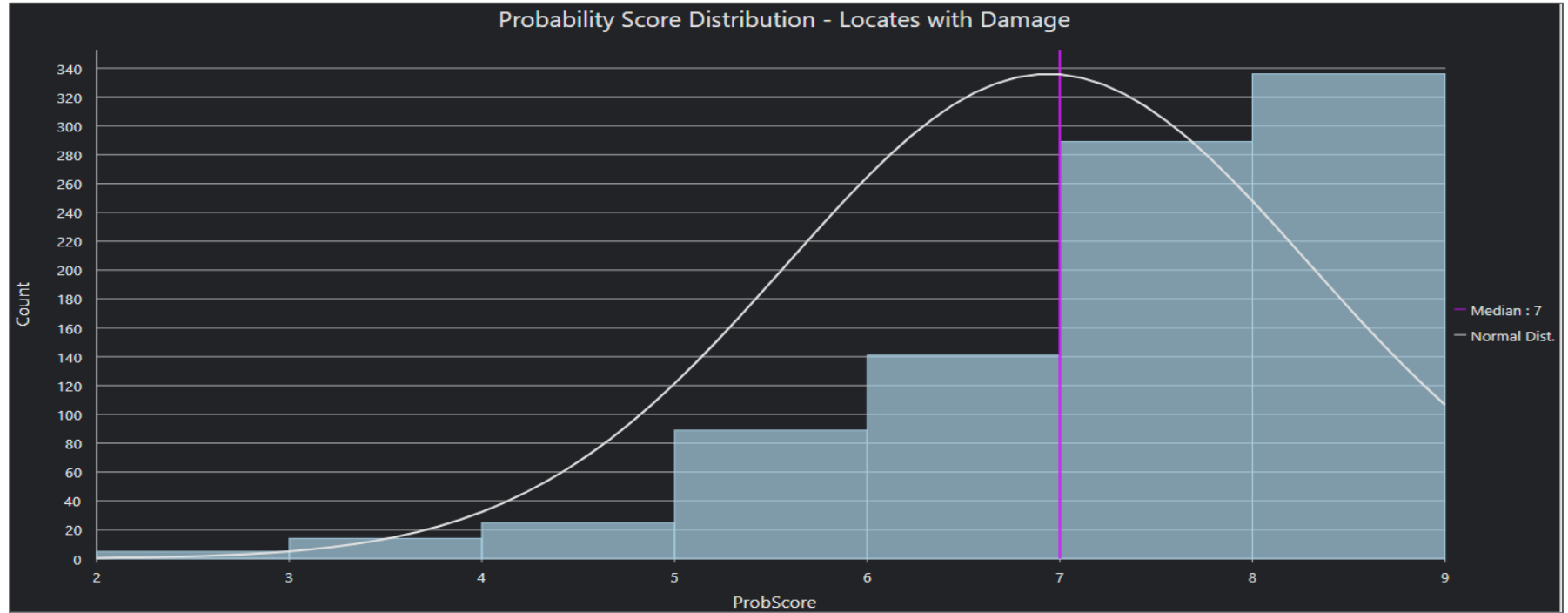
Probability

- Asset Types
- Equipment being used
- Dig Depth
- Proximity to assets

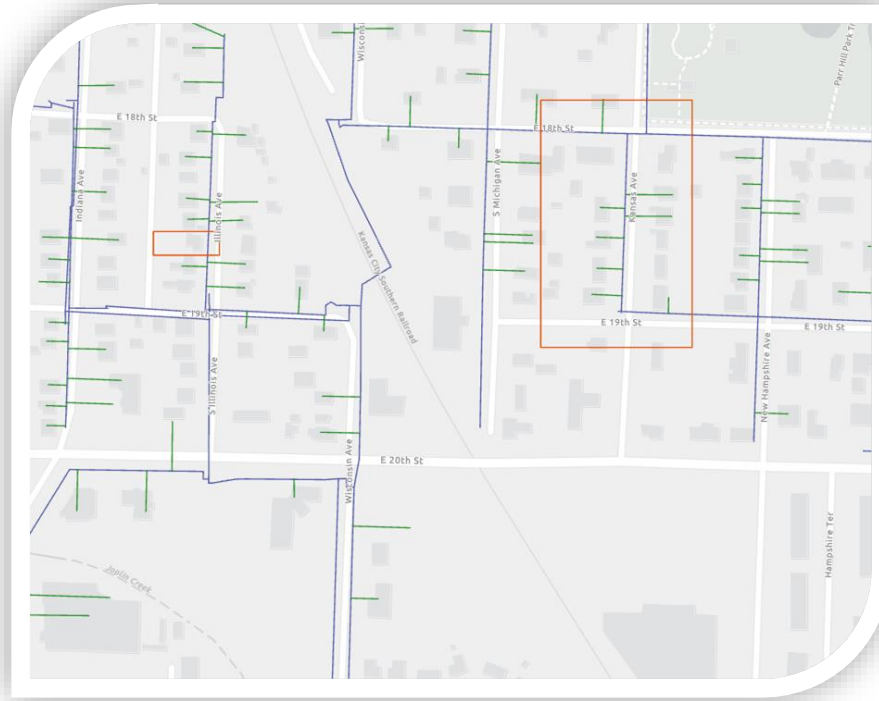
Impact

- Proximity to sensitive public facilities
- Proximity to residential population
- Proximity to high-pressure assets

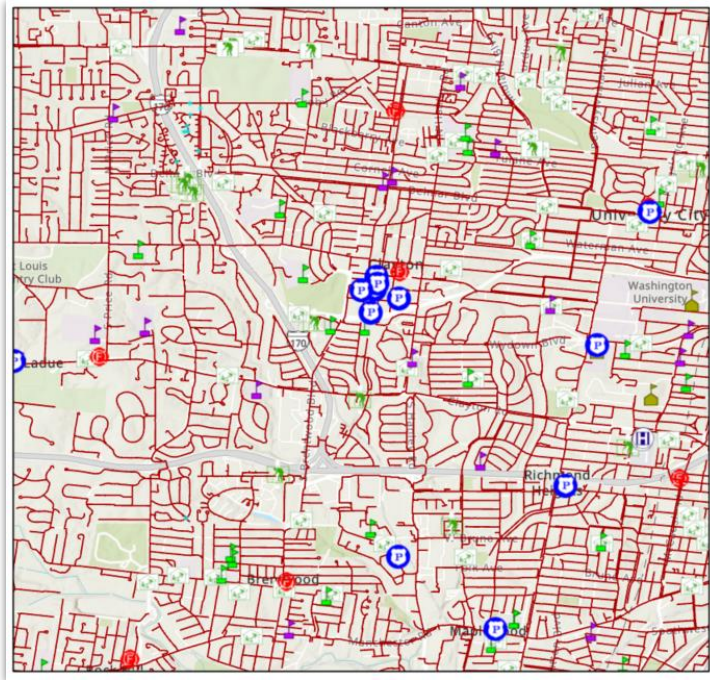




Impact: Proximity

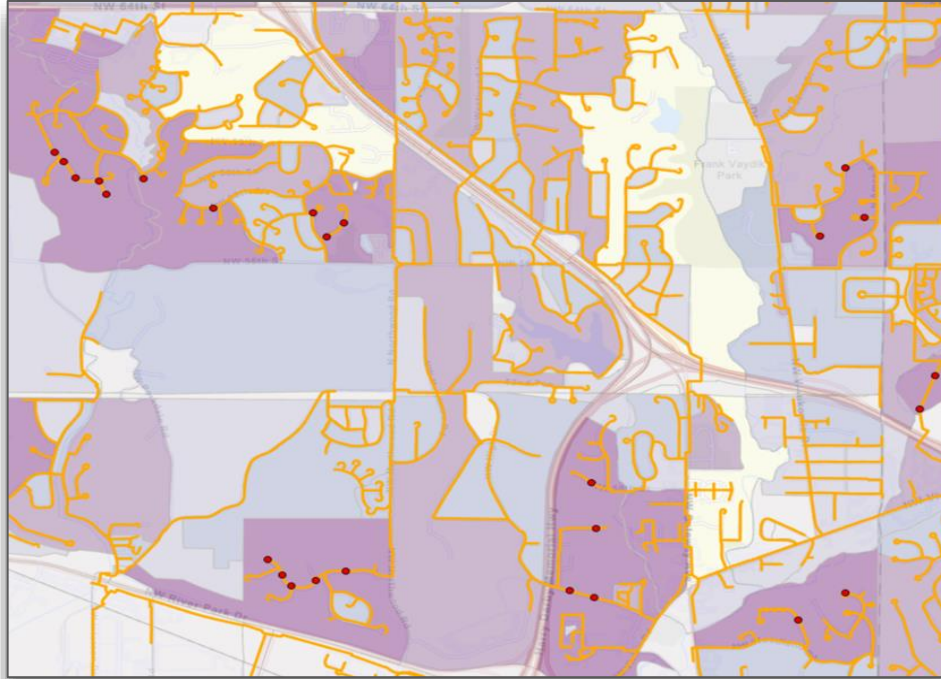
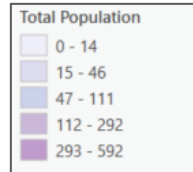


Impact: Sensitive Facilities



3% of tickets were within 500 ft of a sensitive public facility

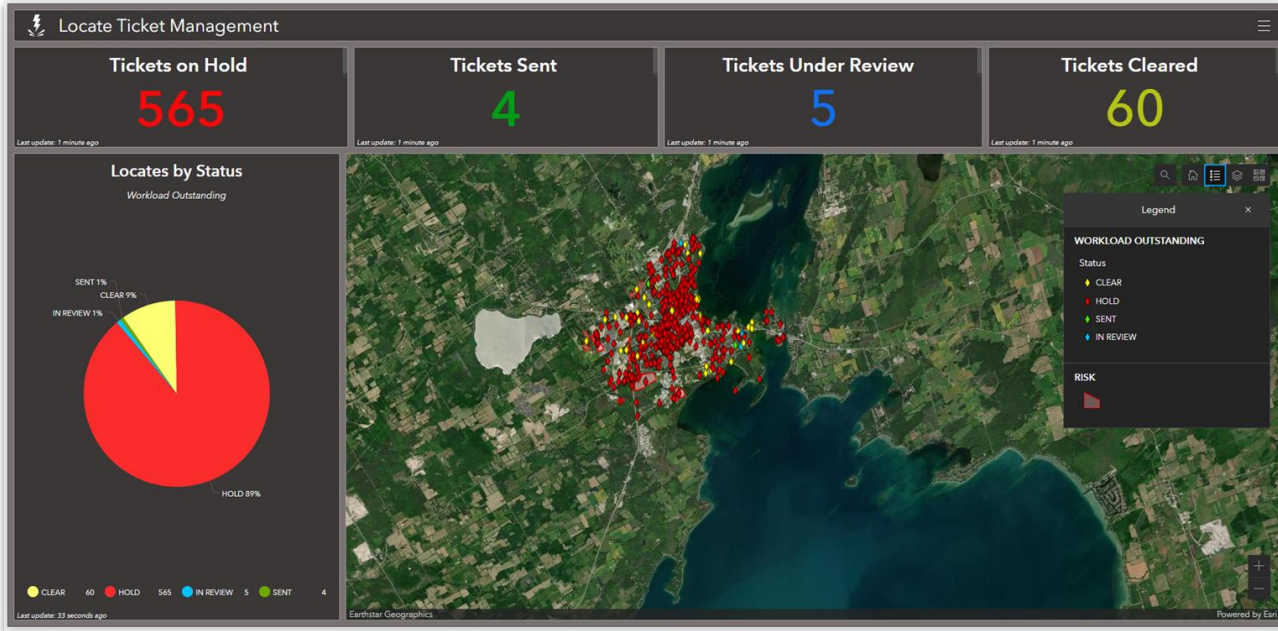
Impact: Population Density



Risk Score



Low Risk Locate Clearing



(1 of 4)

CLEAR [20210816131905]

Locate # 2021343572

Ref Locate #

PV Processed Date 6/16/2610, 7:35 AM

Status

Workload

Priority

Remarks

Add Dig Info

[Zoom to](#)

(1 of 4)

Company

Caller Name Cindy Fleming

Work Done For

County SIMCOE

City ORILLIA

Neighborhood ORILLIA

Editor Date

Editor

Related tables:

NOTIFICATION

TICKET

ATTACHMENTS

WORKLOAD_LOG

[Zoom to](#)

(1 of 4)

CLEAR [20210816131905]

Locate # 2021343572

Ref Locate #

PV Processed Date 6/16/2610, 7:35 AM

Status **CLEAR**

Workload Manual Clearing

Priority STANDARD

Remarks

Add Dig Info CORLOT=N New sump pump discharge line to be run from middle of bay window on east side of house running 65 ft south east across property. Marked with orange spray paint.

[Zoom to](#)

...

QUESTION AND ANSWER



Please fill out your survey!

Open the **Attendee Hub App**,
tap on **Agenda** and then tap on
**Damage Prevention Risk Assessment Using Real-time Call-
Before-You-Dig and Natural Gas GIS Data: Case Study**
and complete the survey for this session.

OR

If you are unable to download the app, a paper survey is
available.